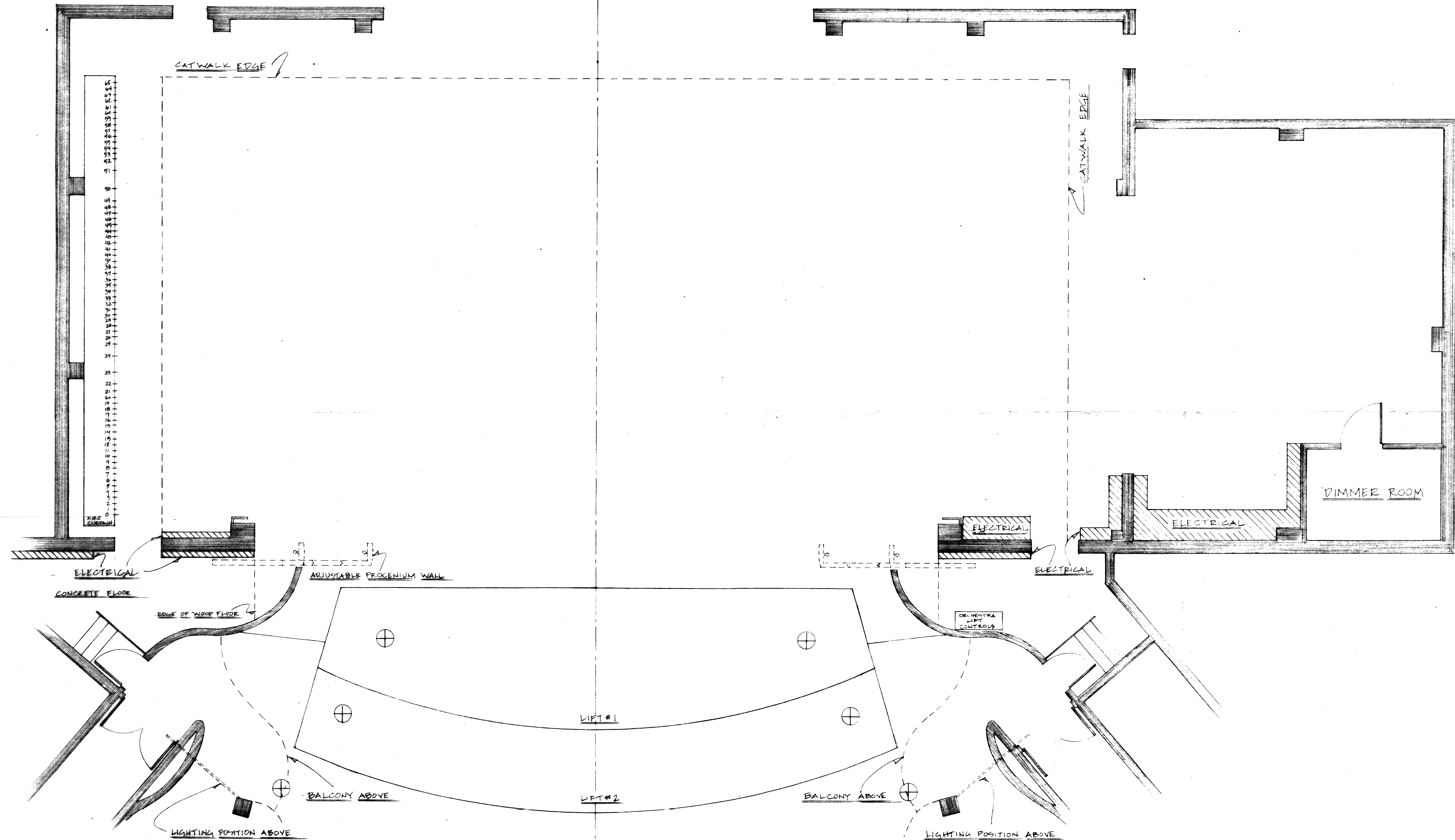
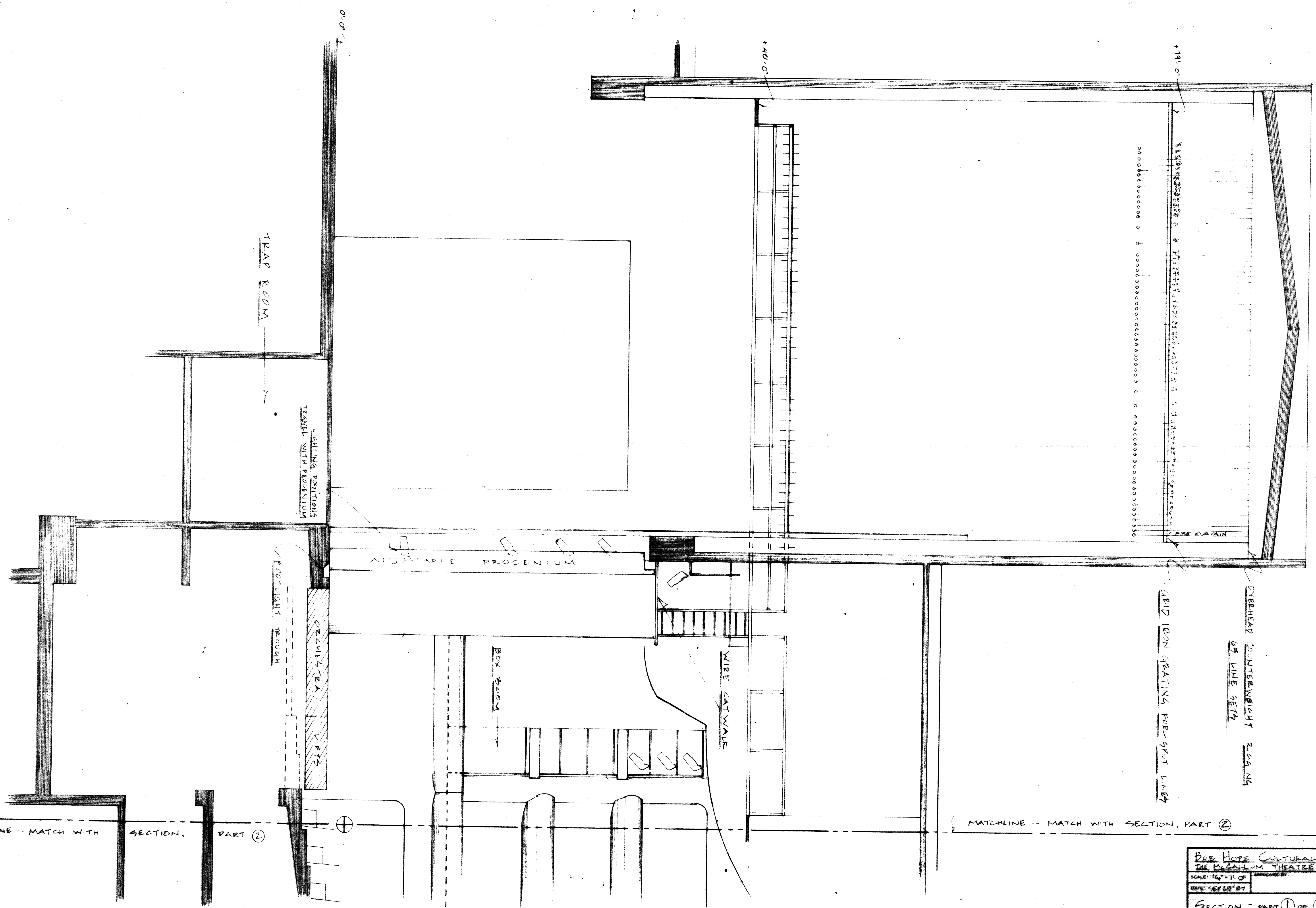


TECHNICAL SERVICES AREA



Set @ 9

BOB HOPE CULTURAL CENTER THE McALLUM THEATRE	
SCALE: 1/4" = 1'-0"	APPROVED BY:
DATE: SEP 23 '87	REVISOR
MASTER PLAN	
DRAWING NUMBER	



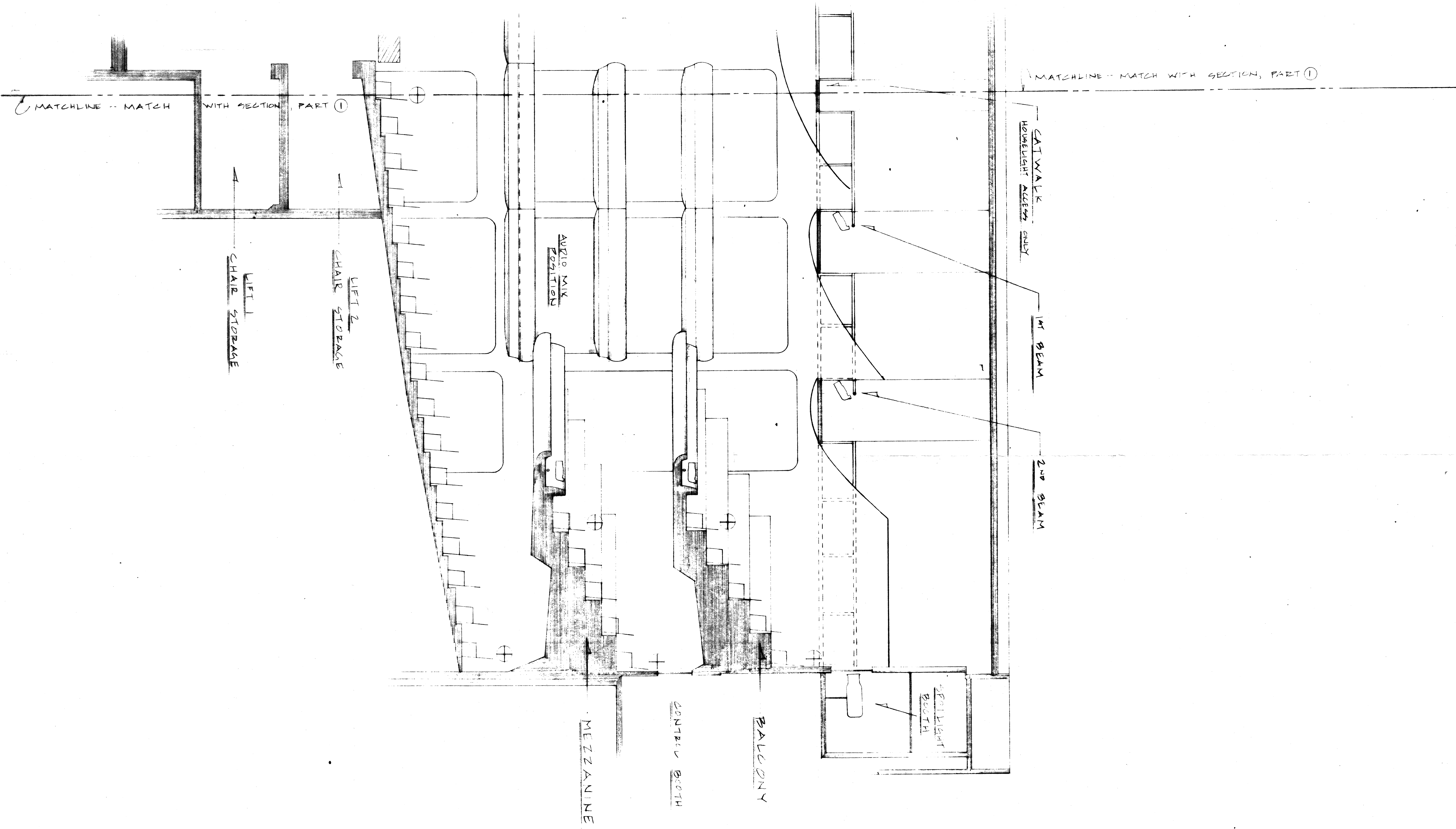
MATCHLINE -- MATCH WITH

SECTION,

PART ②

MATCHLINE -- MATCH WITH SECTION, PART ②

BOB HOPE CULTURAL CENTER THE McALLUM THEATRE		
SCALE: 1/4" = 1'-0"	APPROVED BY:	DRAWN BY: J.E.H.
DATE: SEP 28, 87	REVISOR:	REVISION:
SECTION - PART ① OF ②		
DRAWING NUMBER		

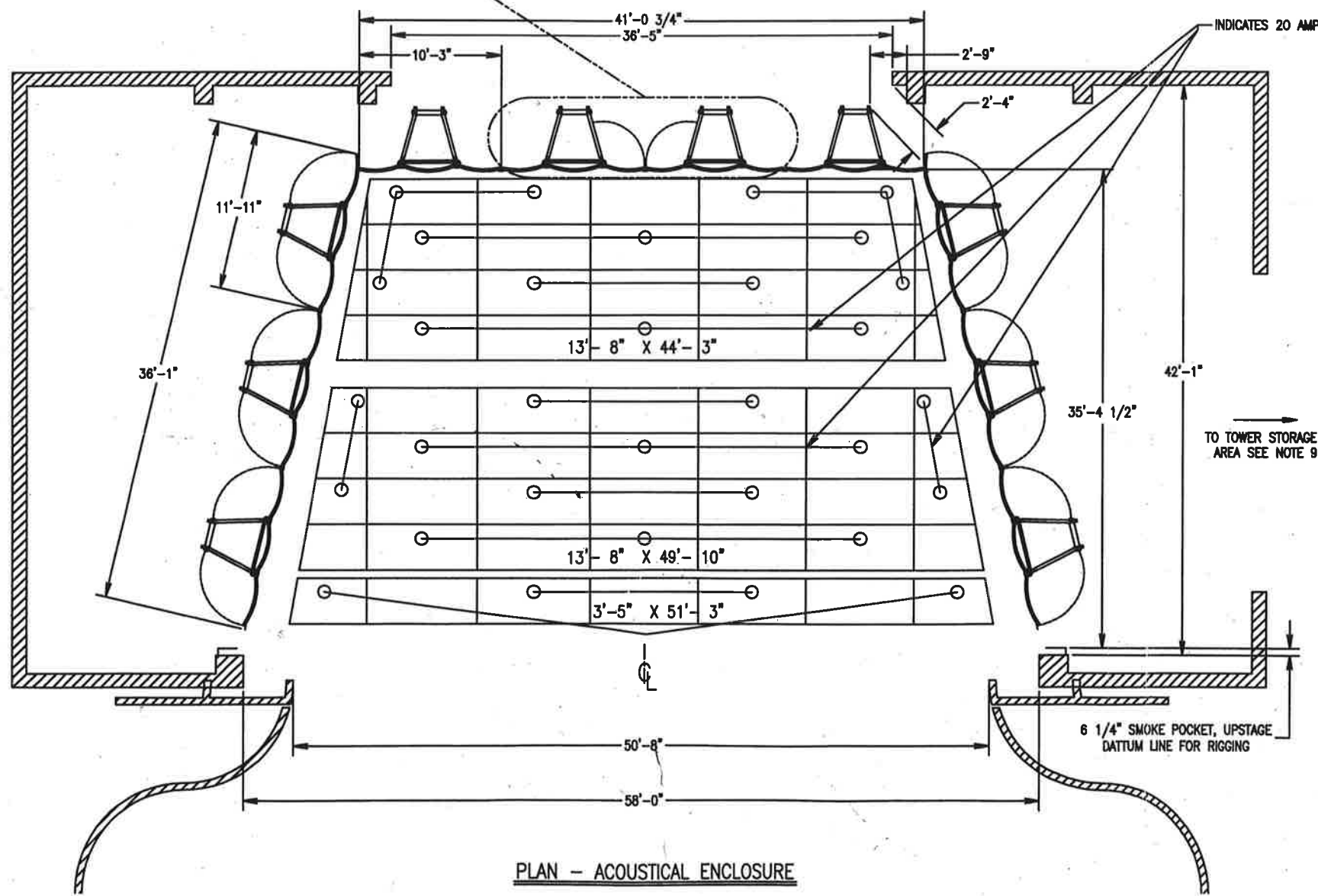


BOB HOPE CULTURAL CENTER THE MEGALLUM THEATRE			
SCALE: 1/4" = 1'-0"	APPROVED BY:	DRAWN BY: JEH	
DATE: SEP 20 '87		REVISED	
SECTION -- PART ② OF ②			
			DRAWING NUMBER



DOOR OPENING REAR TOWERS

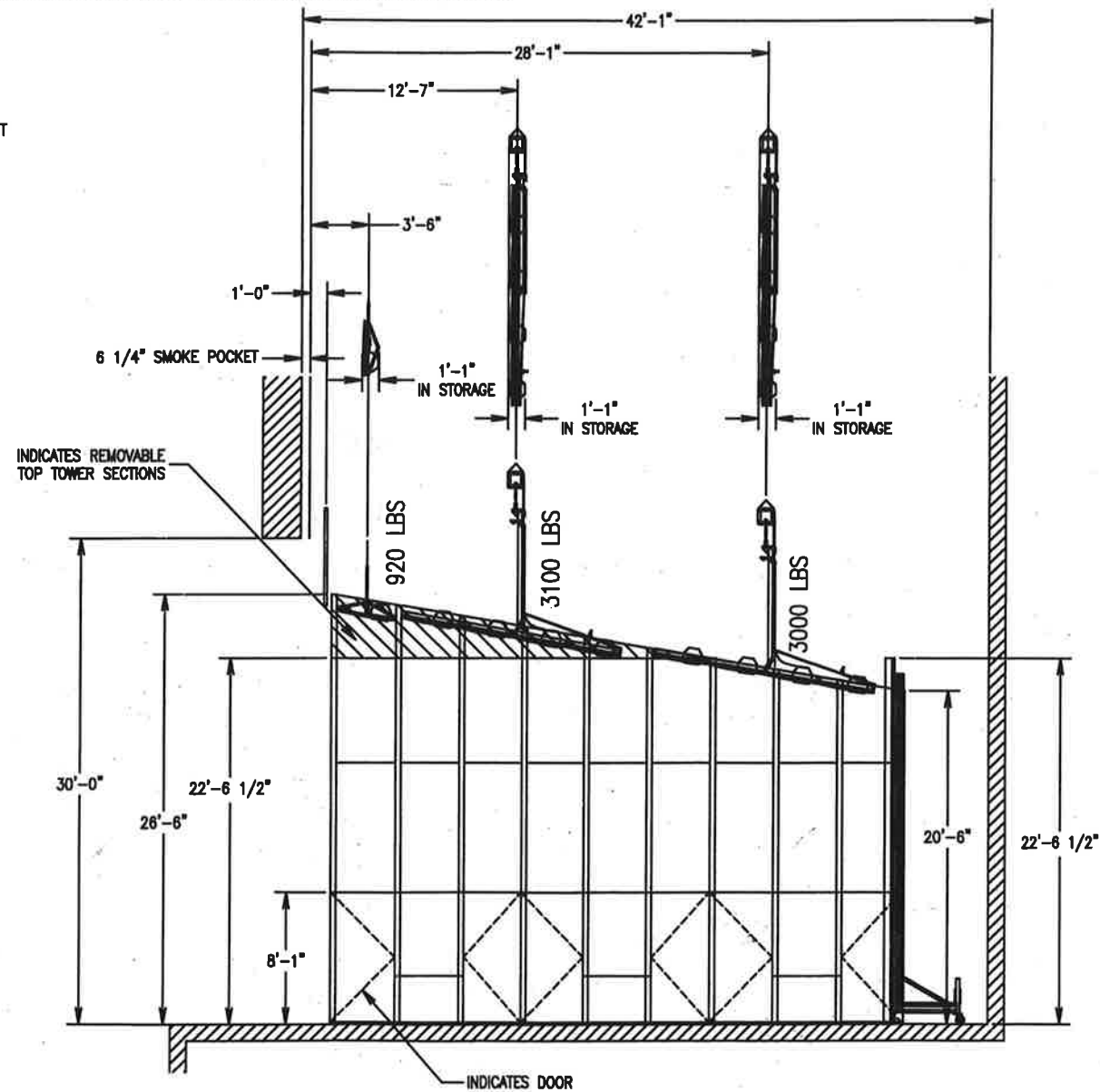
WALL TOWERS IN STORAGE



PLAN - ACOUSTICAL ENCLOSURE

NOTES:

1. FIELD VERIFICATION OF ALL DIMENSIONS IS REQUIRED BEFORE CONSTRUCTION OF SHELL COMPONENTS. THE SITE VISIT WAS DONE 06/24/98.
2. ACOUSTICAL PANELS ARE CONSTRUCTED OF 1 1/2" THICK FIBER HONEYCOMB WITH 3/16" MASCOITE HARDBOARD ON BOTH SIDES (TOTAL THICKNESS OF 1 7/8").
3. ALL RIGGING, RIGGING HARDWARE AND CHAIN MOTORS IS TO BE SUPPLIED AND INSTALLED BY OTHER (NOT IN WENGER CONTRACT).
4. WEIGHT OF CEILINGS IS CALCULATED AND DOES NOT INCLUDE RIGGING OR RIGGING HARDWARE.
5. ALL FINISHES OF THE ACOUSTICAL ENCLOSURE TO BE CLASS "C".
 - (A) THE FACE SIDE OF PANELS IS TO BE PAINTED SHERWIN WILLIAMS SW-1024 WHITE CLIFFS.
 - (B) THE BACK SIDE OF PANELS TO BE PAINTED BLACK.
 - (C) THE TRIM STRIP TO BE PAINTED SHERWIN WILLIAMS BLACK LB1-B21 PRODUCTION LACQUER UNLESS OTHERWISE SPECIFIED.
 - (D) CAP SCREWS, LOCK NUTS, AND ALL OTHER PURCHASED HARDWARE WILL HAVE STANDARD MANUFACTURES FINISH.
6. ALL LIGHTS (32) ARE TO BE A 575 WATT LAMP, SOURCE FOUR PAR LIGHT FIXTURE BY (ELECTRONIC THEATRE CONTROLS). EACH INDIVIDUAL LIGHT FIXTURE WILL BE WIRED TO A TERMINAL BLOCK LOCATED AT THE STAGE RIGHT END OF EACH ROW. LIGHT FIXTURES TO BE GROUP IN CIRCUITS AS INDICATED IN THE PLAN VIEW. A 2' LONG PITING CORD TERMINATED WITH 3 PRONG 20 AMP STAGE PLUG AS NEEDED. THE MULTI-CABLE, DROP BOX OR RELATED HARDWARE REQUIRED TO SUPPLY THE POWER TO THE TERMINAL BLOCK IS TO BE SUPPLIED AND INSTALLED BY McALLUM THEATRE.
7. THE TWO ROWS OF 13'-8" CEILINGS ARE TO BE RAISED AND LOWERED ON CHAIN MOTORS SUPPORTING A TOWACAT BOX TRUSS SUPPLIED AND INSTALLED BY McALLUM THEATRE. THE LOCATIONS OF THESE TWO ROWS REQUIRES THAT THE LINE SET DOWN STAGE OF EACH ROW MUST BE MOVED DOWN STAGE 4" TO 6" TO ALLOW CLEARANCE. THE MOVEMENT OF THE TWO LINE SETS WAS DISCUSSED AS A POSSIBILITY DURING THE SITE VISIT OF 06/24/98. MOVING OF THESE LINE SET IS THE RESPONSIBILITY OF THE McALLUM THEATRE AND SHOULD BE DONE PRIOR THE SHELL INSTALLATION. APPROXIMATELY 2" OF BOW FROM STAGE RIGHT TO LEFT SHOULD BE EXPECTED IN THESE ROWS. THESE CEILINGS ARE NOT DESIGNED TO BE REMOVED IN SECTIONS.
8. THE TOP PORTION OF THE FOUR DOWN STAGE SIDE TOWERS ARE DESIGNED TO BE MANUALLY REMOVED TO ALLOW THE TOWERS TO PASS THROUGH A 23'-3" HIGH DOOR OPENING. McALLUM THEATRE TO SUPPLY THE LIFT, SCAFFOLDING OR OTHER EQUIPMENT IS NEEDED TO GET A PERSON TO THE TOP OF TOWER (NOT IN WENGER CONTRACT). NO STORAGE PROVISIONS SUPPLIED BY WENGER FOR THE REMOVABLE TOWER SECTIONS WHEN REMOVED.
9. THE THRESHOLD BETWEEN THE STAGE FLOOR AND THE STORAGE AREA FLOOR IS TO BE A SMOOTH TRANSITION TO AVOID POSSIBLE DAMAGE TO THE AIR MOVER.
10. THE CEILING PANELS WILL HAVE 20" RADIUS, WHEREAS THE TOWER PANELS WILL HAVE A 5" RADIUS.



SECTION THRU CENTERLINE OF SHELL

REVISIONS	LEVEL
REVISION 1: 8/2/98 J. PITMAN ADJUSTED TOWER TO SHOW MORE DETAIL FOR APPROVAL. ADJUSTED LOCATIONS AND SIZES TO REFLECT ACTUAL. ADDED APPROVAL DIMENSIONS SHEET 2 THROUGH SHEET 6.	1
REVISION 2: 1/29/98 J. PITMAN CHANGED THE CEILING PANEL HEIGHTS FROM 10' TO 11' TO REFLECT THE STAGE REQUIREMENTS.	2
REVISION 3: 2/2/98 J. PITMAN CHANGED THE CEILING PANELS FROM 4 ROWS OF 30' SHALLS TO 3 ROWS OF 30' SHALLS. CHANGED NOTES AS NEEDED.	3
REVISION 4: 7/7/98 J. PITMAN CHANGED THE CEILING PANELS FROM 3 ROWS OF 30' SHALLS TO 4 ROWS OF 30' SHALLS. CHANGED NOTES AS NEEDED.	4
REVISION 5: 8/6/98 J. PITMAN CHANGED THE CEILING PANELS FROM 4 ROWS OF 30' SHALLS TO 3 ROWS OF 30' SHALLS. CHANGED NOTES AS NEEDED.	5
REVISION 6: 8/20/98 J. PITMAN CHANGED THE CEILING PANELS FROM 3 ROWS OF 30' SHALLS TO 4 ROWS OF 30' SHALLS. CHANGED NOTES AS NEEDED.	6

PREPARED FOR:	SIMILAR TO:	This drawing and specification contain information proprietary to Wenger Corporation. Any reproduction, disclosure, or use thereof is expressly prohibited without the written permission of Wenger Corporation.	ONATONIA, MN -- TELEPHONE: 507-455-4100
McCALLUM THEATRE PALM DESERT, CALIFORNIA			
TITLE:	DATE: 6/22/98	SCALE: 3/16"=1'-0"	DWG. NO. SHEET 1 OF 6 REV.
DIVA ACOUSTICAL ENCLOSURE	DRAWN BY: M. INGALLS	L.M. NO. 3/32	A-1117-1D 6
	CHECKED BY:		